



T-FA

FRONT ALERT CAMERA

Overview

T-FA uses artificial intelligent (A.I) to detect situations in front of the vehicle to provide early warning for driver to execute immediate action to avoid impending collision. Real time feedback/warning includes Lane Departure Warning, Forward Collision Warning (FCW), Distance Monitoring and Pedestrian Detection. It works with our T-Watch to provide real time visual and audio warning to the driver.

Lane Departure Warning System

When drivers changes lane unintentionally without triggering left/right signal light, the T-Watch will display a Lane Departure Warning.

Forward Collision Warning

When the current speed and distance away from the front vehicle is less than the preset threshold, the T-Watch will display the distance & time to alert the driver.

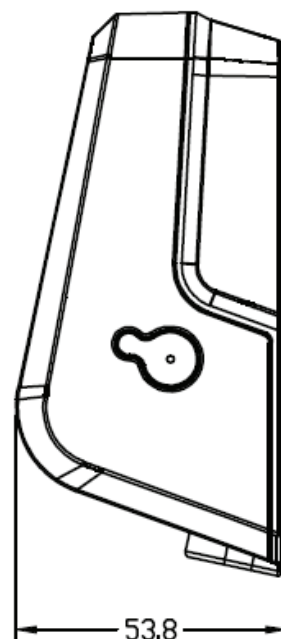
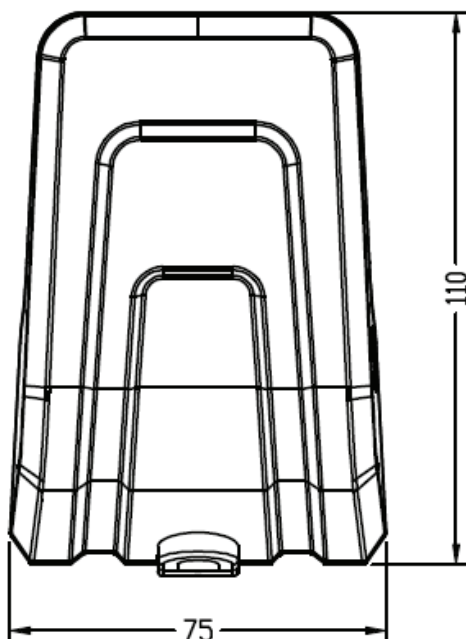
Distance Monitoring

The T-FA camera can detect the distance away from vehicle ahead in real-time during driving. The T-Watch will show the distance between the vehicles ahead in meters and will alert driver if it is dangerous following the distance with vehicle in front.

Pedestrian Detection

When the pedestrian is detected in front of the vehicle while driving, the T-Watch will alert the driver to avoid any impending collision.

Dimension (Unit : mm)

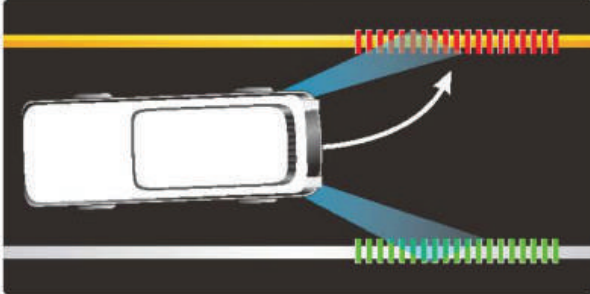


Solution Reference

T-FA

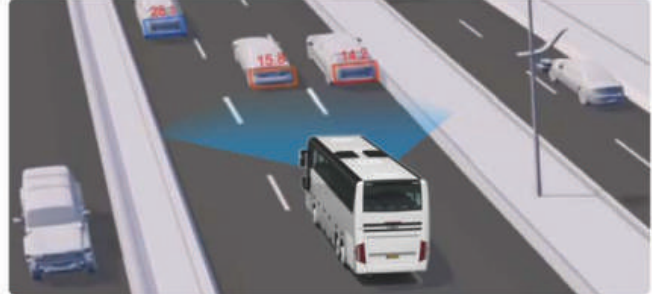
Lane Departure Warning System

When drivers changes lane unintentionally without triggering left/right signal light.



Forward Collision Warning

When the current speed and distance is less than the preset threshold, the T-Watch will display the distance & time to alert the driver.



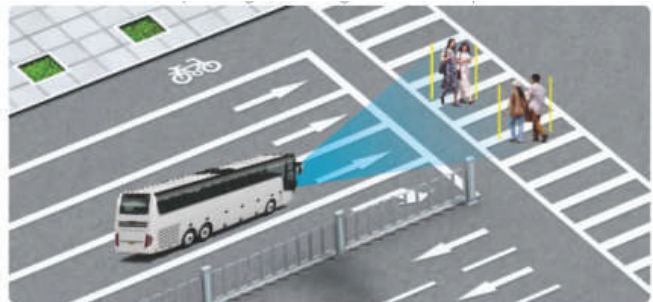
Distance Monitoring

The T-FA camera can detect the distance away from vehicle ahead in real-time during driving. The T-Watch will show the distance between the ahead vehicles in meters and will alert driver if it is dangerous following distance with vehicle in front.



Pedestrian Detection

When the pedestrian is detected in front of the vehicle while driving, the T-Watch will alert the driver to avoid any impending collision.



Specification

Items		Parameters
Sensor Parameter	Sensor	1/2.8"1920*1080 CMOS
	Shutter	1/50 Seconds to 1/100000 Seconds
	S/N	>42dB
	Minimum Illumination	0.1 Lux
Sensor Parameter	Focal Length	8MM (The Amount of Passed Light is F1.8)
	Size	M12
	Wide Dynamic Range	Not Support
Video Parameter	Gain Control	Auto
	White Balance Means	Auto
	Backlight Compensation	Support (Default is Off)
	Mirror Adjustment	Support (Default is Off)
	Exposure Mode	Support (Default is Auto)
Video Output	AHD	1080P
Power	Power Supply	DC12V, DC7V-DC15V With Anti-Reverse Function to Meet the Vehicle Application Requirements.
	Power Consumption	Less than 1.5W



TNT SURVEILLANCE PTE LTD

📍 62, Ubi Road 1, Oxley Bizhub 2
#10-20, Singapore 408734

☎ +65 6333 8687

🌐 www.tnts.com.sg

▶ Enquiry: info@tnts.com.sg